



Flat 5, Chateau Royale La Rue Vardon, Grouville, Jersey, JE3 9HT
£2,500 Per Month

Slomans Estate Agents.
17 La Colomberie, St Helier,
Jersey JE2 4QB
T: 01534 879787
E: sales@slomans.co.uk



Situated on the edge of the Royal Jersey Golf Course within the sought-after Chateau Royale development, this elegant penthouse boasts stunning coastal views over the Royal Jersey Golf Course and Gorey Castle. The apartment offers well-appointed living space. It features a welcoming entrance hall, sitting/dining room, fully fitted kitchen, two double bedrooms (each with en-suite bathrooms). There are two private balconies and two designated secure parking spaces, plus additional visitor parking. The fantastic bars and restaurants at Gorey are only a walk away, and St Helier is just a 15-minute drive, or conveniently accessible via one of the best bus routes on the island. The Pembroke Pub is just a 3-minute walk, and Homegrown, Homefields farm shop and Co-op Locale, are also close by. Available now to Licensed and Entitled tenants.



Slomans Estate Agents.
17 La Colomberie, St Helier,
Jersey JE2 4QB
T: 01534 879787
E: sales@slomans.co.uk



VIEWING

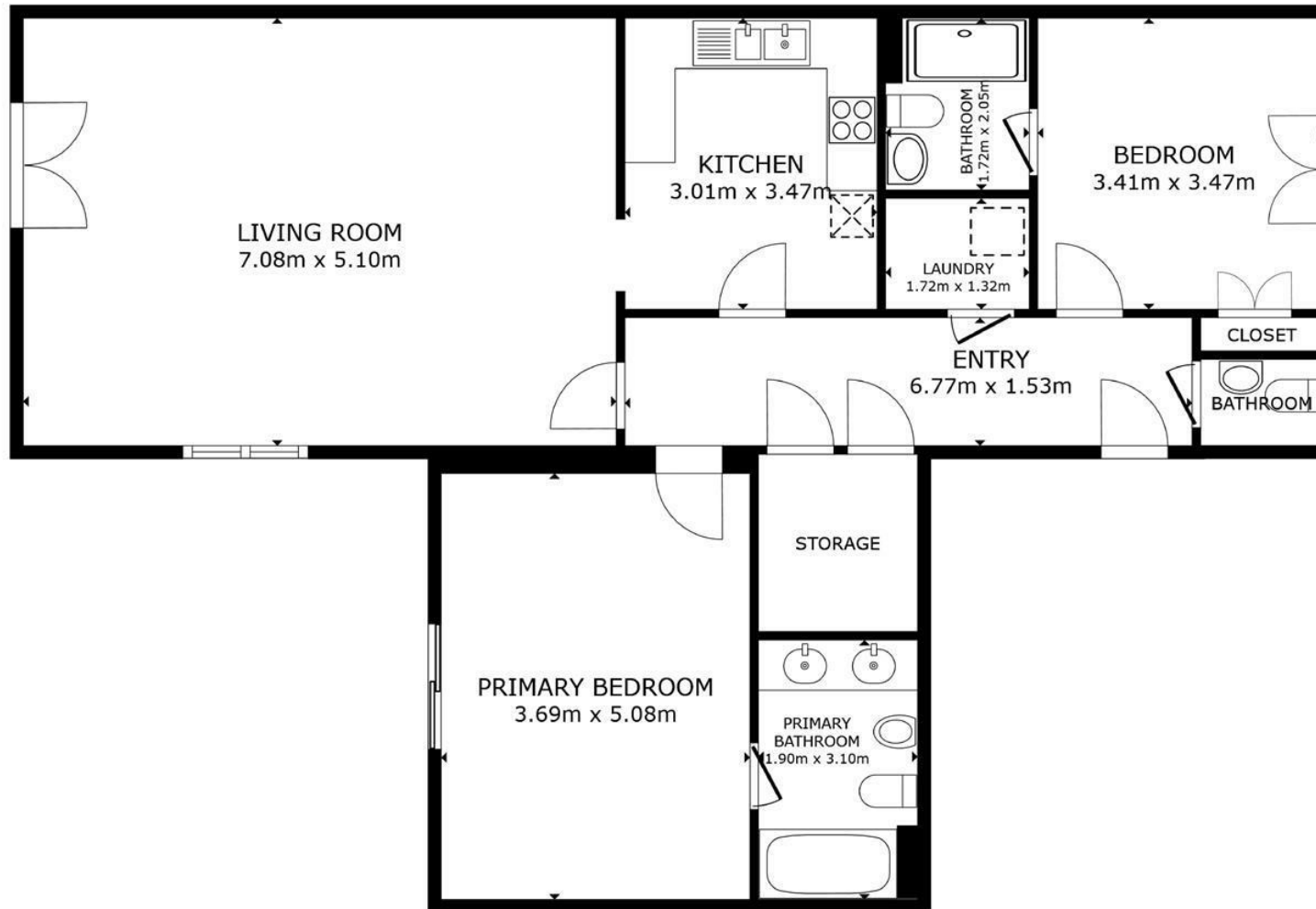
Please call Slomans, Sole Agents on 87 97 87.

Please note that all areas and measurements given
in these particulars are approximate and rounded.

The text, photographs and floor plans are for general
guidance only.







FLOOR PLAN

GROSS INTERNAL AREA
FLOOR PLAN 109.9 m²
TOTAL : 109.9 m²

SIZES AND DIMENSIONS ARE APPROXIMATE, ACTUAL MAY VARY.